



Executive Sales Manager

Jean Jacques Soete

yacht@abyacht.com

Whatsapp : +33 611 354 611 (FR)

+ 44 1414 160 507 (EN)

Brokerage / Charter / New construction
Commercial vessel / Xbow

Management & Companies

Jorges Rodrigues

jorgerodrigues-316@adv.ao.pt

Whatsapp : + 351 916 415 314

Euro Flag / Management
Crew : Madeira free zone Portugal,
Malta, France, Luxembourg Italy

FOR SALE : MAIORA 36M // 2017

ASKING PRICE : 8 395 000 €

VAT : PAID



GRP Hull & Superstructure
Trade in Possible Lying Italy
LOA 36,20 M
5 guest cabins

This MAIORA 36X DP for sale is a 119' motor yacht with an overall length of 36.2m. The yacht's builder is Maiora from Italy, who launched her in 2017.

Link to pictures : <https://photos.app.goo.gl/UUfTCXy6EFhwrwtC7>

The volumes have been increased considerably on this Superyacht with her 8.20m beam, she is the widest of her category, boasting a 7-meter wide flybridge and a total volume of 273 GT.

The MAIORA 36X DP features a raised pilothouse design by Quartostile in collaboration with (Centro Stile) of the shipyard and reflects the perfect evolution of the unmistakable Maiora lines, still maintaining that family feeling which has made the Tuscan brand famous all over the world.

Harmony features exterior design by Quartostile. Up to 10 guests can be accommodated on board the superyacht, Harmony, and she also has accommodation for 7 crew members, including the ship's captain. Harmony has a GRP hull and a GRP superstructure. She is powered by 2 MTU engines. Built from a Kevlar-reinforced GRP hull and superstructure to RINA standards, this yacht is capable of effortlessly cutting through the waves thanks to her deep V planing hull while also providing a comfortable stay onboard thanks to twin Seakeeper gyroscopic stabilizers installed for the ultra-smooth, no roll experience both at anchor and underway.

Power comes from a pair of 2600 Hp MTU Diesel engines, which propel her to a top speed 30 knots, while cruising at 25 knots. When trimmed back to her economical cruising speed of 12 knots, this MAIORA 36X DP boasts a maximum range of 1100 nautical miles. Accommodation on board the MAIORA 36X DP is for 10 guests in 5 en-suite staterooms.

The main deck master stateroom forward, features a private study, walk-in wardrobe and fold-out superyacht terrace, while the 4 further guest cabins on the lower deck are arranged as two convertible twins and two doubles.

Thanks to her broad beam, the yacht ensures an impressive interior volume, which is most noticeable in the main deck saloon, where all 10 guests can share a meal in the formal dining room. Her glass inserts in the bulwarks provide abundant natural light into this area.

Moving upstairs, her sundeck features an aft Jacuzzi, cocktail bar, plentiful seating for al-fresco dining and a convertible hardtop. Her entirely separate crew quarters are situated in the bow and allow for a staff of up to 5 crew members split across 3 en-suite cabins. Tender storage is provided via a side-loading garage which can house both a tender and a jet-ski.

This MAIORA 36X DP represent a rare opportunity to buy a highly equipped, well laid-out Superyacht from an experienced owner and benefits from award-winning design from one of the highest quality Italian yacht builders.

KEY FEATURES

10 Guests in 5 en-suite staterooms

Master suite on main deck

Private use, EU VAT paid

Superb condition

Considerable range of 1100 NM @ 12 knots

2 x Seakeeper zero speed and underway gyroscopic stabilizers

Lateral launching garage for tender and jet-ski

Sundeck with Jacuzzi and hard top

Solid construction with Kevlar® hull

Malta Flag

Studio Quartostile / Centro Stile Maiora

MTU 16V2000 Diesel with V-drive 2600 HP X 2 with 5 blade propellers X 2

LOA: 36.20 M

Beam : 8.20 M

Draft : 1.70 M

5 guest en-suite cabins

6 heads

Full specifications

MAIN CHARACTERISTICS

Builder: Gruppo Fipa – Maiora (Italy)

Model: Maiora 36X DP

Naval Architect: Maiora

Exterior Designer: Studio Quartostile Italian Design / Centro Stile Maiora

Interior

Designer: Fossati Design Bureau

Type: Motor Yacht / Flybridge Yacht / Superyacht / Raised Pilothouse

Hull Type: Deep V / Planing
Hull Material: Composite (Kevlar/carbon-reinforced GRP)
Superstructure Material: Composite (Kevlar/carbon-reinforced GRP)
Decks: Teak
Model: 2017
Length Overall: 36.20 m (118' 9")
Maximum Beam: 8.20 m (26' 11")
Draft (full load): Approx. 1.70 m (5' 7")
Displacement (full load): Approx. 160,000 kg (352,740 lb)
Gross Tonnage: 273 GT
Flag of Registry: Malta
Classification: RINA C \otimes HULL • MACH Y - Unrestricted Navigation (Pleasure)
Certification Module: CE Class A
Location: Italy

CONSTRUCTION

Kevlar® reinforced GRP sandwich laminated using vacuum bagging and resin infusion techniques

PROPULSION

Type / Fuel: Twin Diesel
Main Engines: 2 x 2600 Hp (1939 kW) MTU 16V 2000 M96L @ 2450 RPM
Engine
Hours: 1160 h (April 2023)
Maximum Speed: Up to 30 knots
Cruising Speed: Up to 25 knots
Range at Cruising Speed: Approx. 750 NM
Economical Speed: 12 knots
Range at Economic Speed: Approx. 1100 NM
Gearboxes: 2 x ZF 5050 V series with configuration "V-Drive"
Propellers: 2 x DETRA 5-blade

TANKAGE

Fuel Capacity: 20,000 l (5,283 US Gallons)
Fresh Water Capacity: 3,000 l (793 US Gallons)
Holding Tanks: 430 l (113.5 US Gallons)

ACCOMMODATION

10 Guests in 5 en-suite staterooms for 10 Guests + 3 Crew cabins for 5 crew) Guest Cabin

Configuration:

Master stateroom located forward on the main deck, with double forward-facing bed,

Owner's study, walk-in dressing room, en-suite bathroom with double sinks, opening

lateral balcony to starboard side 2 x VIP cabins located on the lower deck fitted with double beds, closets and en-suite

bathrooms

2 x Twin guest cabins located on the lower deck fitted with sliding beds (convertible into

doubles), closets and en-suite bathrooms

Crew Accommodation:

3 x En-suite cabins for 5 crew 1 x Single Captain's cabin

2 x Twin bunk bed cabins

Crew mess with galley, dinette, lounge and laundry

Main deck with main saloon, formal dining area for 10, day head and fully equipped

galley Main wheelhouse in raised pilothouse

MAIN EQUIPMENT

Stabilization: 2 x SEAKEEPER® model 35 gyroscopic stabilizers zero speed (underway

and at anchor) Air-Conditioning: Reversible CONDARIA 288,000 BTU PCWM-72002

Bow Thruster: Electric, SIDE POWER PJC222, 45 kW, 400V

Stern Thruster: Electric, SIDE POWER PJC222, 30 kW, 400V

Watermaker: 250 l/h watermaker IDROMAR MC5, 400V, 3-phase

Electric System: 400V-380V AC / 220V AC, 3-phase, 50Hz – 24V DC

Generators: 2 x Electric diesel generators KOHLER 70 EFOZDJ of 70 kW each, 3-phase

Generator Hours: 1850 h (April 2023)

Engines start battery bank

Generators star battery bank

Services battery bank

Emergency battery bank

Battery charger
Inverter
Shore power inlet
Automatic (electric) bilge pump system
Manual bilge pump system
2 x Hot water boilers

NAVIGATION EQUIPMENT

FURUNO navigation equipment Raised Pilothouse Helm Station:
MTU electronic engine controls
MTU electronic engine displays
2 x FURUNO TZTBB 00CE25 monitoring system
2 x FURUNO GPS 3308
FURUNO autopilot NAVpilot FURUNO VHF DSC Class A GMDSS +
dedicated FURUNO GPS 5 x ICOM portable
VHF's
FURUNO Felcom 18 Inmarsat C
THRANE & THRANE TT-3672A Sat phone
FURUNO radar open array 4ft
FURUNO echosounder
AIRMAR weather station
AIRMAR tridata log-speed-temperature
FURUNO AIS
ARPA
On Flybridge Helm Station:
MTU electronic engine controls
MTU electronic engine displays
2 x FURUNO 16" multifunction displays
FURUNO autopilot second station repeater FURUNO display data repeater
FURUNO VHF
FLIR night vision camera on mast remote controlled
In Crew Quarters:
FURUNO display data repeater Monitoring System
5 x CCTV Camera System:
2 x Cameras at stern
1 x Camera in the port side corridor
1 x Camera in the starboard side corridor
1 x Camera in the engine room
Wi-Fi network

DOMESTIC APPLIANCES

Galley:

BOFFI galley

MIELE cooker hood 90cm

MIELE induction hob 90cm

MIELE oven 90cm

MIELE dishwasher 60cm

RARITAN ice-maker

LIEBHERR refrigerator 120cm

KRUSHR trash compactor

Bar Furniture on the Flybridge:

Sink

Ice-maker

Minibar

Cooler drawer Crew Mess:

Sink

LIEBHERR minibar 60cm

MIELE washer and dryer

ENTERTAINMENT

SAMSUNG 75" 8K TV in the main saloon SAMSUNG 65" 8K TV in the master suite

SAMSUNG 32" Smart TV for the guests' cabins SAMSUNG 24" Smart TV for the crew

mess SONOS Hi-fi audio system

Cockpit, flybridge and bow deck speakers

DECK EQUIPMENT

Stern beach club with day toilet

Electro-hydraulic telescopic gangway with teak inserts and stainless-steel handrails

Swimming ladder

4 x Underwater lights below swim platform

Third control station

Hot/cold deck shower

Fresh water deck washdown system

2 x Electro-hydraulic mooring capstans

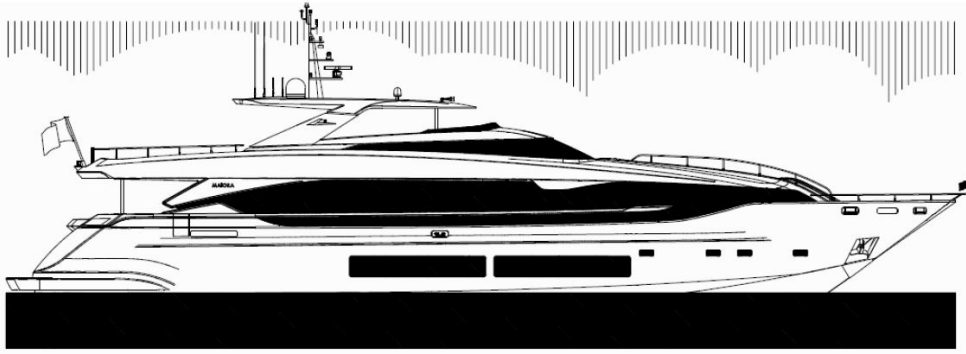
Sunbathing station on aft cockpit

Aft cockpit settee with teak table and chairs
Side garage with lateral launching/haulage system for tender and jet-ski
Bow deck with sun loungers and coffee table
2 x Hydraulic vertical windlasses
Galvanized stainless-steel anchors and chains
Sundeck with second pilot station, L-shaped settee with dining table, chairs, sun loungers, bar with pantry and stools, loose furniture and aft Jacuzzi surrounded by sunbeds
Hard top on sundeck
Teak swim platform, Teak Add deck,
Teak sidewalks,
Teak stairs,
Teak flybridge and bow deck Aft deck,
Teak flybridge and bow deck
Cushions for aft deck, flybridge and bow deck covers
Liferafts with capacity for 24 persons
AERMARINE Cabrio CH 460 with HONDA 90 Hp engine
SEADOO Spark 900 HO (2017)
Inspections with 4/5 days notice.
Berth Management possible:
- French and Italian Riviera,
- Croatia,
- Spain and Balearics islands,
- Portugal and Madeira Island European free zone.

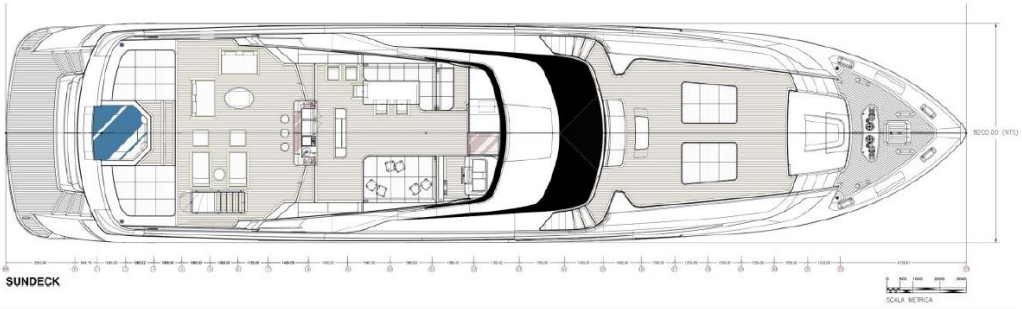




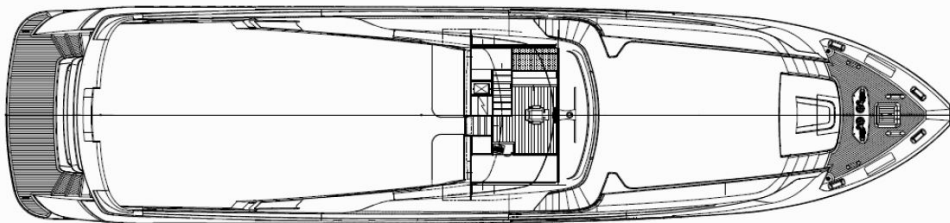




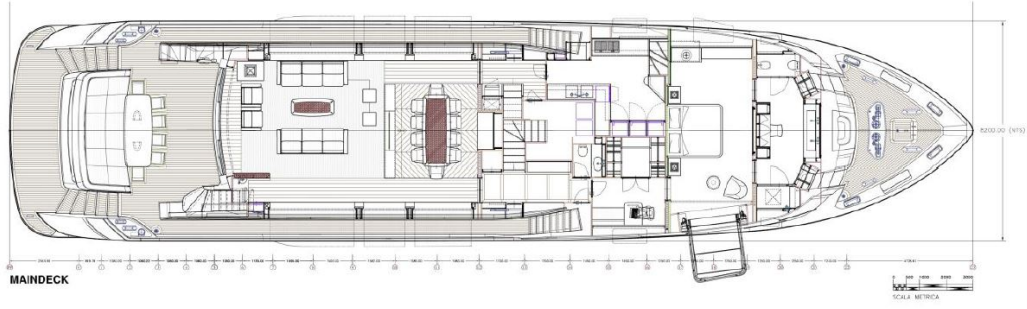
PROFILE



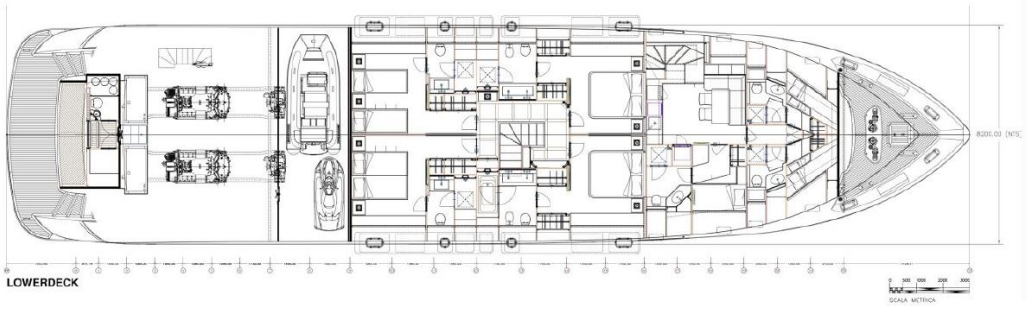
SUNDECK



PILOT HOUSE



MAINDECK



LOWERDECK









