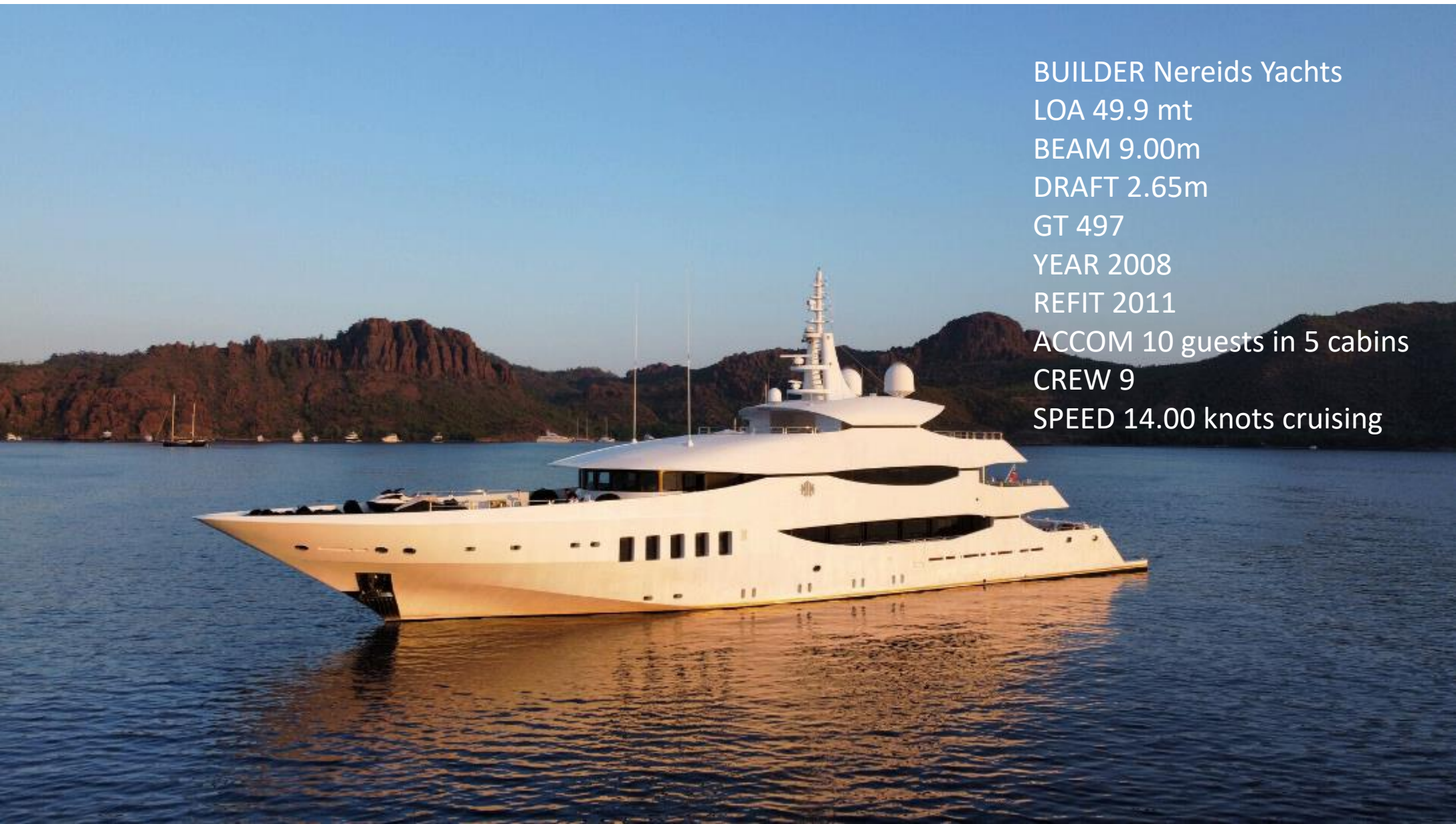


NEREIDS Yachts 2008



BUILDER Nereids Yachts

LOA 49.9 mt

BEAM 9.00m

DRAFT 2.65m

GT 497

YEAR 2008

REFIT 2011

ACCOM 10 guests in 5 cabins

CREW 9

SPEED 14.00 knots cruising









































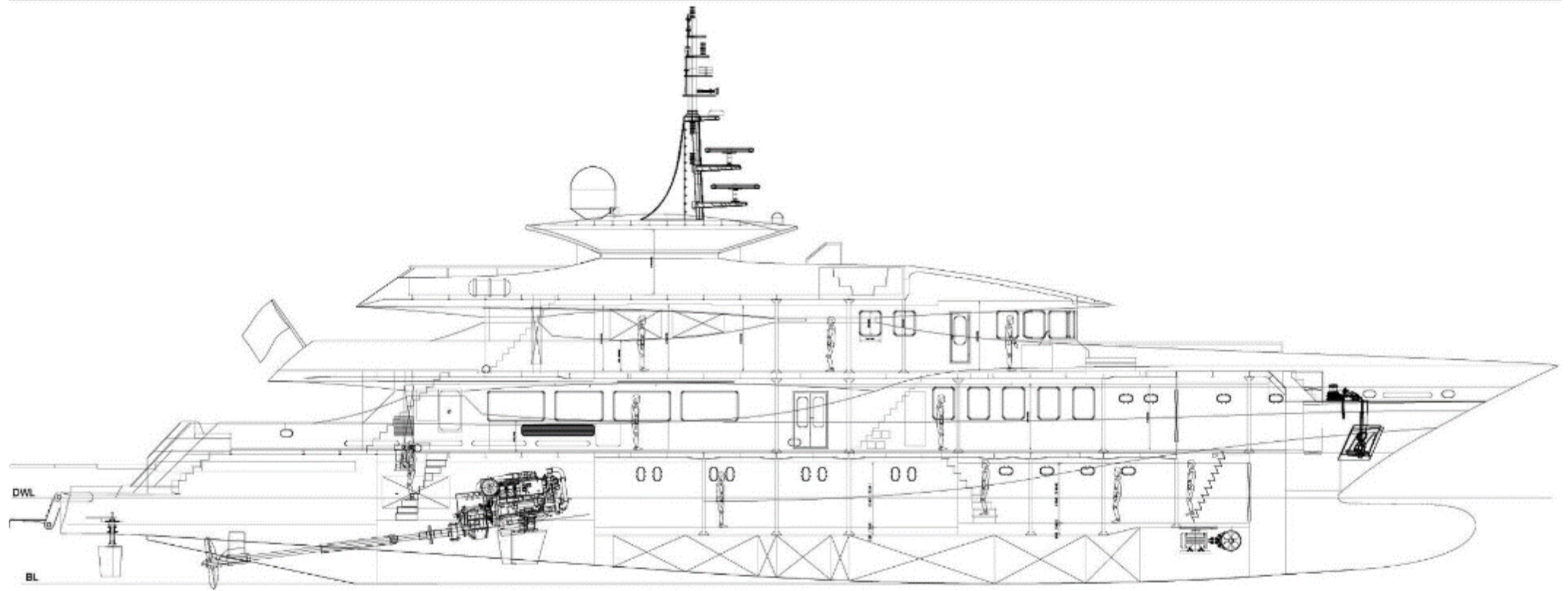




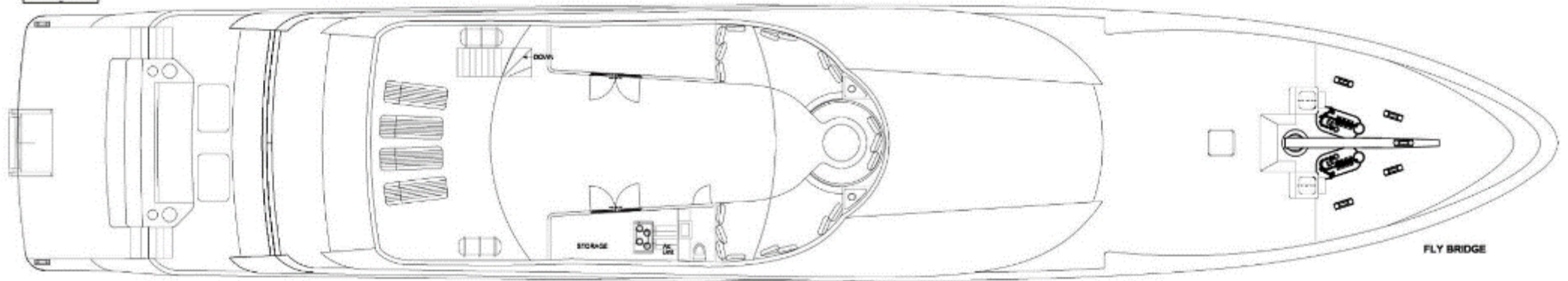




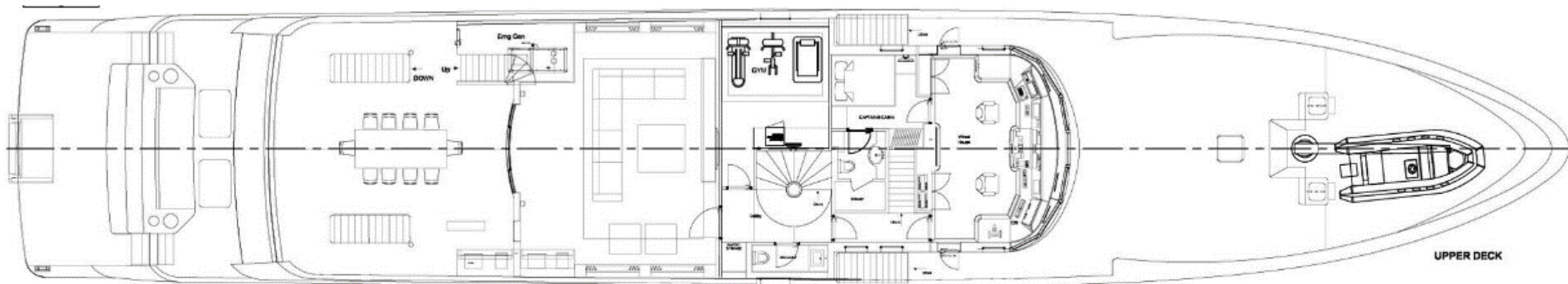




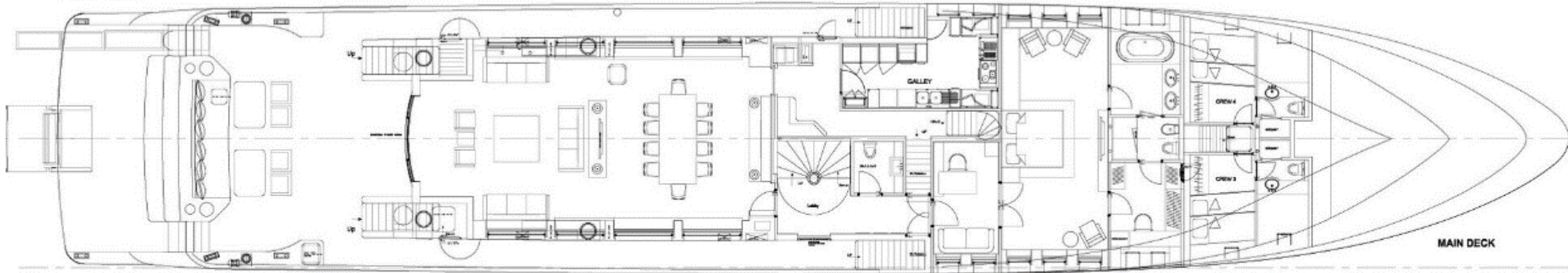
06 05 04 03 02 01 0 1 2 3 4 5 6 7 8 9 10 11 12 13 14 15 16 17 18 19 20 21 22 23 24 25 26 27 28 29 30 31 32 33 34 35 36 37 38 39 40 41 42 43 44 45 46 47 48 49 50 51 52 53 54 55 56 57 58 59 60 61 62 63 64 65 66 67 68 69 70 71 72 73



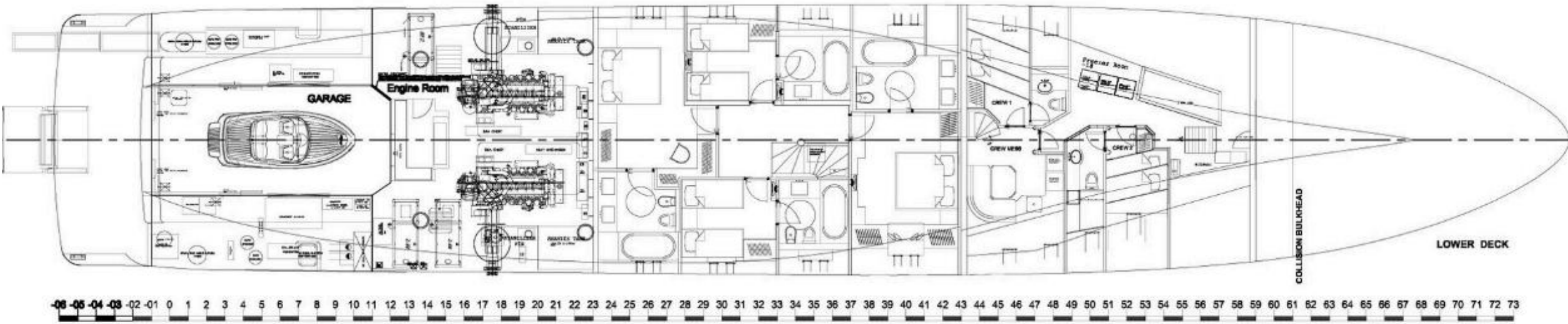
06 05 04 03 02 01 0 1 2 3 4 5 6 7 8 9 10 11 12 13 14 15 16 17 18 19 20 21 22 23 24 25 26 27 28 29 30 31 32 33 34 35 36 37 38 39 40 41 42 43 44 45 46 47 48 49 50 51 52 53 54 55 56 57 58 59 60 61 62 63 64 65 66 67 68 69 70 71 72 73



06-05-04-03-02-01 0 1 2 3 4 5 6 7 8 9 10 11 12 13 14 15 16 17 18 19 20 21 22 23 24 25 26 27 28 29 30 31 32 33 34 35 36 37 38 39 40 41 42 43 44 45 46 47 48 49 50 51 52 53 54 55 56 57 58 59 60 61 62 63 64 65 66 67 68 69 70 71 72 73



06-05-04-03-02-01 0 1 2 3 4 5 6 7 8 9 10 11 12 13 14 15 16 17 18 19 20 21 22 23 24 25 26 27 28 29 30 31 32 33 34 35 36 37 38 39 40 41 42 43 44 45 46 47 48 49 50 51 52 53 54 55 56 57 58 59 60 61 62 63 64 65 66 67 68 69 70 71 72 73



BUREAU VERITAS Register .04371D
FOR REFERENCE
 See report n° FPO:14/01860
 Nantes, 26-Mar-2014
 [Electronic document]

Rev.no.	Revision Notes	Date	Signature	Checked	
4	E/R Ventilators updated	27.06.2013	C.SOYASLAN	LSOYASLAN	MAIN DIMENSIONS L.O.A. = 49.44 m L.W.L. = 42.14 m B = 9.00 m D = 4.21 m d = 2.85 m Disp. = 500 ton V = 16 kn
3	Exhanced aft body added to the plan	28.11.2012	T.SOYASLAN	LSOYASLAN	
2	Monitoring room of E/R is added	18.02.2008	S.BURGAZ	T.TORK	
1	Revised with the final modifications	18.02.2008	S.BURGAZ	T.TORK	

CONTENTS

1 MAIN CHARACTERISTICS

2 DIMENSIONS

3 SPEED & RANGE UNDER POWER

4 CAPACITIES

5 ACCOMMODATION

6 MECHANICAL EQUIPMENT

7 NAVIGATION EQUIPMENT

8 COMMUNICATION EQUIPMENT

9 DECK EQUIPMENT

10 REFIT & MAINTENANCE NOTE

1. MAIN CHARACTERISTICS

TYPE	Semi Displacement Motor Yacht
BUILDER HULL NO.	Nereids Yachts YN46 I
NAVAL ARCHITECT	Soyaslan Design
EXTERIOR DESIGN	Soyaslan Design
INTERIOR DESIGN	Design Investment Sàrl
YEAR	2008
REFIT	2011/2021
CLASSIFICATION	ABS
CONSTRUCTION	Steel Hull & Superstructure Teak Decks
CREW	Up to 9
FLAG	United Kingdom
ENGINES	1 x 1,678 kW (2,250 Hp) Caterpillar 3512B
GT	497

2. DIMENSIONS

LOA	49.9m
BEAM	9.00m
DRAFT	2.65m

3. SPEED & RANGE UNDER POWER

MAXIMUM SPEED	16.00 knots
CRUISING SPEED	14.00 knots

ECONOMICAL SPEED	10.00 knots
RANGE	4,500nm at 14.00 knots

4. CAPACITIES

ACCOMMODATION	10 x Guests in 5 cabins
CREW	9 x Crew in 5 cabins
FUEL	45,000 litres / 11,888 US gallons
FRESH WATER	11,500 litres / 3,038 US gallons

5. ACCOMMODATION

Accommodation for up to 10 guests in 5 cabins and up to 9 crew.

GUEST CABINS	1 x Master cabin 2 x VIP cabins 2 x Twin cabins
CREW CABINS	1 x Captain cabin 4 x Crew cabins

6. MECHANICAL EQUIPMENT

ENGINES	1 x 1,678 kW (2,250 Hp) Caterpillar 3512B Diesel (@1,925 rpm)
GENERATORS	1 x 70 kW (94 Hp) Kohler 70EFOZ
EMERGENCY GENERATOR	1 x 55 kW (74 Hp) Kohler 55EFOZ
PROPELLER	Eliche Radice 5-blade, D=1850mm
GEARBOXES	2 x 4.313:1 ZF W7000 reverse-reduction
ENGINE CONTROLS	PMC
ELECTRICAL SYSTEM	380V AC 3-phase 50HZ, 220V AC single-phase 50HZ, 24V
SHORE POWER	Extendjs II 90 kW/112 KVA
STEERING SYSTEM	Data Hydraulic
BOW THRUSTER	1 x CMC Marine 75kW
STABILISERS	CMC Marine zero speed
AIR CONDITIONING	Novenco Hi Pres HVAC system
WATERMAKERS	2 x Idromar reverse osmosis 13,000 litres / 3,434 US gallons each p/d
SEWAGE TREATMENT	Hamann biological system (IMO approved)
TOILET SYSTEM	EVAC Vacuum
FUEL OIL SEPARATOR	1 x Alfa Lava

7. NAVIGATION EQUIPMENT

RADAR	2 x Simrad RA80-90 series radar
CHARTS	1 x Simrad CS66 Chart system
DGPS	1 x Simrad GN33D D-GPS
AUTOPILOT	1 x Simrad AP50 Auto-pilot
GYRO COMPASS	1 x Simrad GC80 Gyro system
COMPASS	1 x Cassens & Plath 21 overhead compass
LOG	1 x Furuno DS 80 speed log
ECHO SOUNDER	1 x Furuno FE 700 echo sounder
NAVTEX	1 x ICS Nav5 Navtex receiver
EPIRB	1 x ACR RLB 35 EPIRB
TANSPONDER	2 x Simrad SA50 search & rescue transponder
WIND INSTRUMENTS	1 x Radio Zeeland Sigma 130
AIS	1 x AI80

8. COMMUNICATION EQUIPMENT

SATCOM Sailor H2095C	Inmarsat
SAT C	Nera Fleet 77
SSB	Sailor HC4500B
VHF TALK-BACK SYSTEM SAT TV ANTENNA	2 x Sailor RT52 GMDSS with DSC CTB10 Seatel 5004
SHORE TV ANTENNA	Naval
LANDLINE PHONE	Panasonic