



yacht@abyacht.com

Whats App + 33 611 354 611 + 44 1414 160 507

Brokerage, New construction, Conversion, Refitting, management, Flag, Charter. Refit, Surveyor, Commercial vessel, Xbow commercial vessel.

Management and companies

Euro Flag Management, crew : Madeira Free zone Portugal, Malta, France, UK, Luxembourg, Italy.

Jorge Rodrigues : Madeira Portugal

+351 916 415 214 WhatsApp Email :

jorgerodrigues-316m@adv.oa.pt

Maiora 36,90 M 2024

Asking Price : 17.00.000 € Vat not paid

Call us for trade in or final quotation



Maiora 36,90 M Exuma Specifications

The motor yacht Maiora 36,90 Exuma is produced by the brand Maiora since 2021. The Maiora 36,90 Exuma is a semi-displacement or also can be a fast yacht with 5 or 6 guest cabins and a draft of 1.38 meters. The yacht has a fiberglass / grp hull with a CE certification class (A) and can navigate the open ocean.

Length : 36.90 M
Beam : 7.80 M
Draft : 1.38 M

If he is interested in waterjets propulsion:

Main key features of this model:

- *Waterjet propulsion for an incredible list of advantages (thanks also to the stronger and lighter hull than traditional ones, with sandwich-advanced structure and carbon fibres), such us:*

- *HIGH PERFORMANCES (from 35 to 40 knots maximum speed, depending upon selected engines)*
- *MORE EFFICIENCY (Lt/mile almost stable from planning mode onwards; and at idle/displacement speed like a navetta)*
- *NO VIBRATIONS and LESS LEVEL OF NOISE ON BOARD (no vibration due to the lack of shaft and propellers or even surface drive or other types of propulsion)*
- *EASY MANEUVERABILITY (through the intuitive single joystick), MORE COMFORT and SAFETY (the “crash-stop” is a Class operation to test: from full speed down to zero the boat literally stops in less than two of her own lengths)*
- *SUPERB SEAWORTHINESS*
- *4ft (four feet) DRAFT, SHALLOW WATER CAPABILITY*
- *300GT (297 effectively!) of volumes on board, thanks to the extended first level superstructure (partially semi-symmetrical in the aft part, the remaining part being full-beam) and to the full-beam second level superstructure;*
- *Huge windows everywhere on board for a continuous connection with outside light and sea;*
- *Impressive net headroom throughout the boat;*
- *Master Suite on the main deck, full beam and super beamy (and several options for expansion/reconfiguring, like a private gym or studio or massage room or playroom or library or.....);*
- *Two aft garages: one side-type for a large tender (a William 625 can fit in); plus, and aft garage for jet-ski or a smaller service tender, Seabob and inflatables; NOTE – the US version needs to come with the SCR equipment and so the very aft garage will be likely to be removed for such installation requested by EPA and US Coast Guard;*



- *Besides the Master Suite on the MD, a 4-cabin layout on the lower deck (effectively three VIP cabins and a second Master Suite on the lower deck too);*
- *Two galleys (one on the main deck and the other – huge! – for the crew on the lower deck);*
- *Unobstructed flybridge and main deck with no steps, all is on the same level;*
- *Huge crew accommodations area (5 or 6 crew members in three cabins; three bathrooms with showers; crew dinette; or possibility to have a 4th smaller cabin for an additional crew member);*
- *Possibility to lower the side windows on the upper deck; open up the aft electrical infinity door and the roof as showed ... and get a proper standard flybridge, on-demand.*
- *Possibility, otherwise, to opt for two independent pilot-houses, for formal or informal enjoyment (with crew or without) during navigation.*

CONSTRUCTION

Hull : Composite
Superstructure : Composite

DIMENSIONS

<i>Length Overall L.O.A.</i>	<i>36.90 M</i>
<i>Beam</i>	<i>7.90 M</i>
<i>Max Draft</i>	<i>1.47 M</i>
<i>Displacement at full load</i>	<i>170 T</i>

TANKS CAPACITY

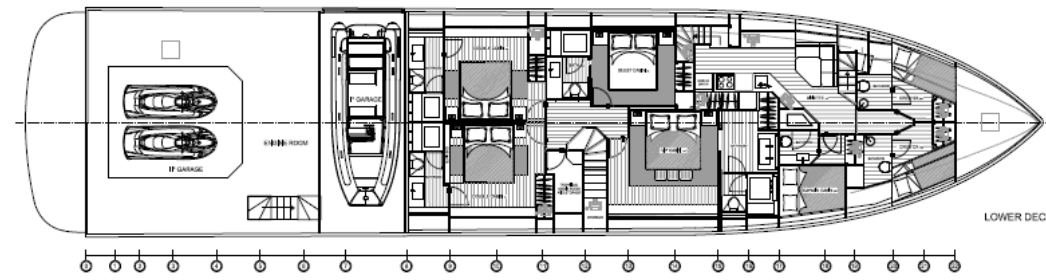
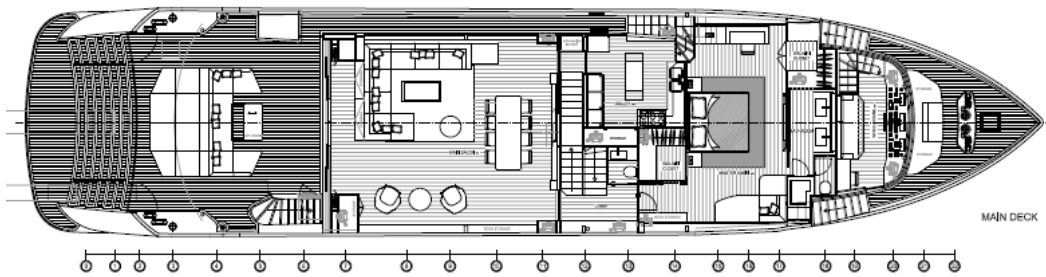
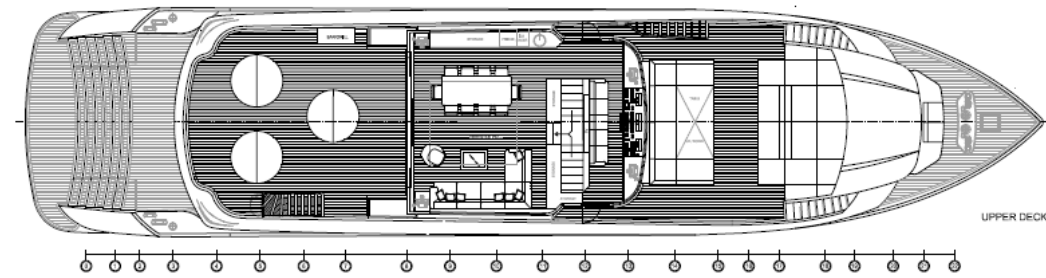
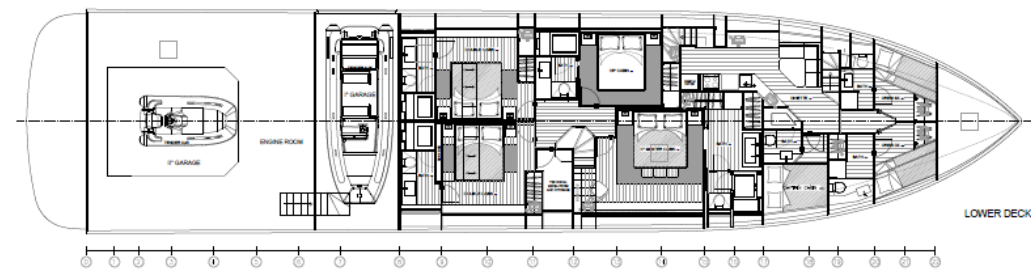
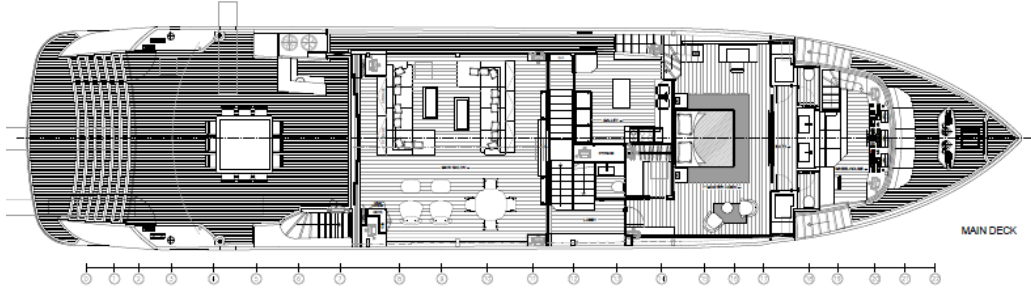
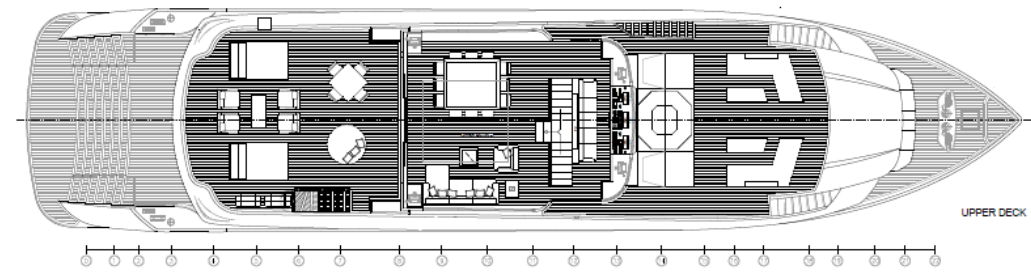
<i>Fuel Capacity</i>	<i>21.000 L</i>
<i>Water capacity</i>	<i>3.000 L</i>

PROPULSION

<i>Main engines power</i>	<i>3x MAN V12-2000 2000 hp each (1471 kW @2300 RPM)</i>
<i>Transmission</i>	<i>2x Steerable MJP Waterjets + 1x MJP Central Booster</i>
<i>Stabilization</i>	<i>2x Seakeeper Gyro-Stabilizers</i>
<i>Max speed</i>	<i>33 knots</i>
<i>Cruising Speed</i>	<i>28 knots</i>
<i>Range</i>	<i>1.400 NM</i>

ACCOMMODATION

<i>Guests</i>	<i>Up to 12 guests in 5 Cabins</i>
<i>Crew</i>	<i>5 crew in 3 cabins</i>



Layout with engines and main shafts.























