



*abyacht.com : Jean Jacques Soete yacht@abyacht.com
WhatsApp + 33 611 354 611 + 44 1414 160 507
Brokerage, New construction, Conversion, Refitting, management,
Flag, Charter. Refit, Surveyor, Commercial vessel, Xbow
commercial vessel.*

Management and companies

*Euro Flag Management, crew : Madeira Free zone Portugal, Malta,
France, UK, Luxembourg, Italy.*

*Jorge Rodrigues : Madeira Portugal
+351 916 415 214 WhatsApp Email : jorgerodrigues-316m@adv.*

Ferretti 960 2017

Asking Price : 6.250.000 € vat paid



Link to pictures :

<https://photos.app.goo.gl/ndJg7sryaY8Cau5H7>

KEY FEATURES

Possible to register under 24 metres

10 Guests in 5 en-suite cabins

Privately owned and used

Maintained to highest standards

Zero speed stabilization (under way and at anchor) New external upholstery in 2022

Full VAT paid
Low hours, fully serviced and ready for season

Privately owned and used Maintained to highest standards Stabilization (under way and at anchor)

Full VAT paid

Ready for season

2 X MTU 2638 HP (16 V 2000 M96 L

Engines hours : 1090

Onan Generator 27 Kw X 2

LOA : 29,20 M

Beam : 6,70 M

Displacement : 99 T

Grp hull & Superstructure

5 cabins layout

Crew area : 3 cabins and 2 bathrooms

Day head at main deck

MAIN CHARACTERISTICS

Builder: Ferretti Yachts (Italy)

Model: Ferretti 960 RPH

Hull Number: 16

Naval Architecture: Advanced Yacht Technology (AYT), Ferretti Group Engineering

Exterior Styling: Zuccon International Project

Interior Design: Zuccon International Project

Type: Motor Yacht / Flybridge Yacht / Raised Pilothouse Hull Type: 12° deadrise warped hull / Planing

Hull Material: GRP

Superstructure Material: GRP

Decks: Teak

Year Built: 2017

Overall Length: 29.20 m (95' 10')

Hull Length: 23.98 m (78' 8")

Waterline Length: 22.34 m (73' 4")

Maximum Beam: 6.72 m (22' 1')

Draft: 2.20 m (7' 3")

Displacement Unladen: 87,000 kgs (191,802 lbs) Displacement Laden: 99,000 kgs (218,258 lbs) Classification: B + F + Aa (Sound Emission) - RINA S.p.A. Flag of

Registry: Malta

Location: Adriatic Sea, Croatia



PROPULSION

Type / Fuel: Twin Diesel

Main Engines: 2 x 2520 Hp (1880 kW) MTU 16V 2000 M96 @ 2450 RPM Engine Hours: 1070 h (April 2023)

Maximum Speed: 30 knots

Cruising Speeds: 20 to 24 knots

Fuel Consumption: 500 l/h @ cruising speed

Range: 280 NM @ Max Speed

350 NM @ Cruise Speed

Transmissions: V-drives

Gearboxes: ZF Reduction gear

Propellers: 2 x 5-blade fixed pitch bronze props

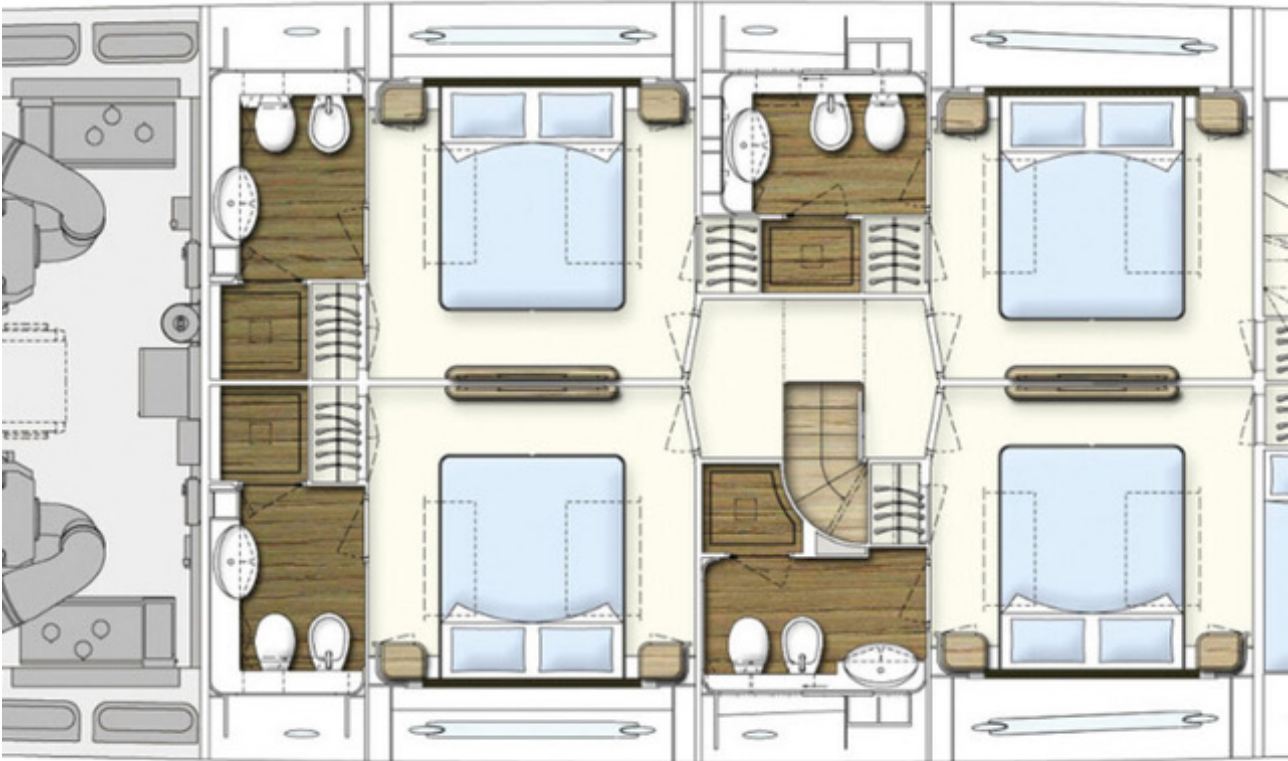
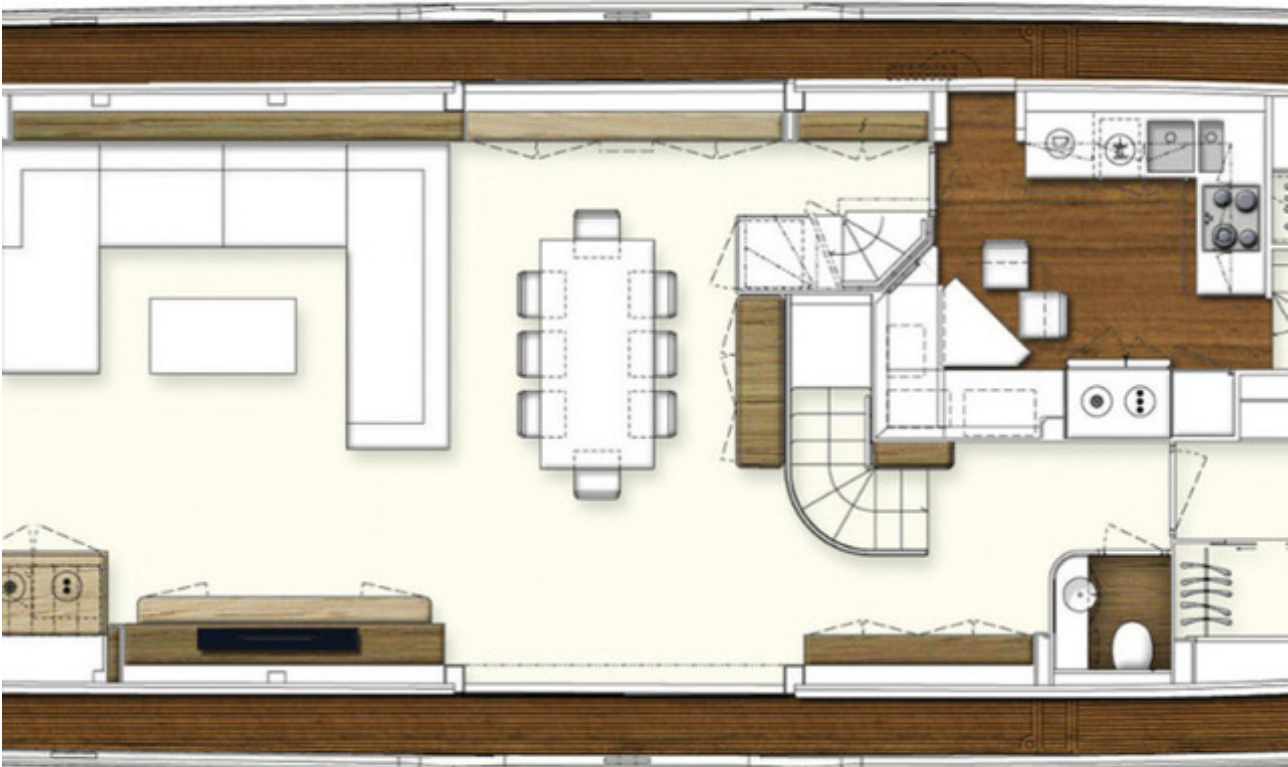
Fresh Water Capacity: 1,320 l (349 USG)

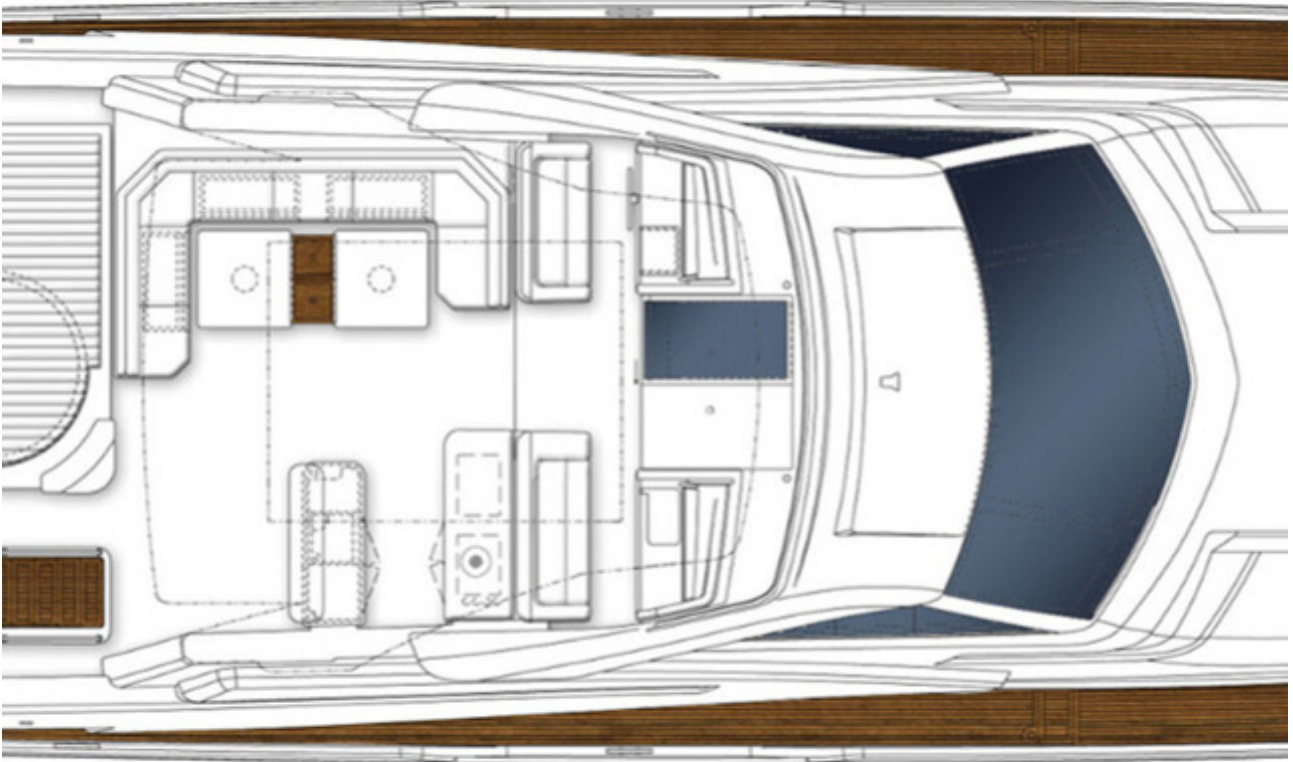
Black Water Tank: 330 l (87 USG)

Grey Water Tank: 330 l (87 USG)

ACCOMMODATION

10 Guests in 5 en-suite staterooms Guest Cabin Configuration:





Master Cabin is located forward on the main deck with double island bed, walk-in wardrobe, and en-suite bathroom with separate toilet

3 x Spacious double cabins on lower deck, each with closets and en-suite bathrooms

1 x Twin guest cabin, with en-suite bathrooms, which can be converted into double (sliding beds) Crew

5 Crew in 3 cabins with 2 shared bathrooms Single Captain's cabin with en-suite bathroom 2 x Bunk-bedded crew cabins, with bathroom

Saloon, formal dining, fully equipped galley and day-head on main deck Maximum Number of Persons Onboard: 20 Pax

MAIN EQUIPMENT

Bow Thruster: ABT Trac

Stern Thruster: ABT Trac

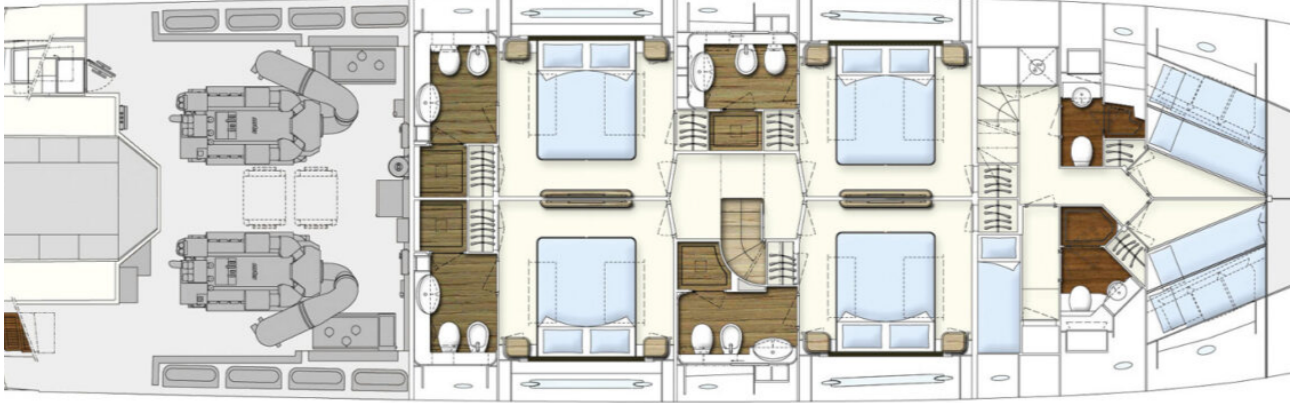
Rudder control system

Stabilizers: 2 x SEAKEEPER 9 Gyroscopic zero speed stabilizers

Watermaker: IDROMAR 180 l/h

Air Conditioning System: CONDARIA

Hot Water: 2 x Boilers



NAVIGATION & COMMUNICATION EQUIPMENT

MTU electronic engine controls

MTU electronic engine displays

*Navigation & communication system fully equipped by
SIMRAD:*

GPS

Plotter

AP24

Radar Autopilot VHF 90

Eco sounder

NAVIOP onboard systems computer

Sat KVH TV8

AIS (receiving signal)

Second station on the flybridge CCTV:

1 x in the aftdeck

1 x on swimming platform

2 x in the engine room

1 x external colour camera, additional

DOMESTIC EQUIPMENT

Galley:

GE fridge with freezer

SIEMENS induction cooker and extractor hood SIEMENS oven 70 cm

MIELE microwave

MIELE wine cellar

SIEMENS dishwasher Others:

2 x Icemakers: Saloon and flybridge

*3 x Additional fridges: Galley, saloon and flybridge Grill on the flybridge
MIELE washing machine
MIELE drying machine*

DECK EQUIPMENT

*Tilting tender garage with easy-launching winch
BESENZONI hydraulic telescopic gangway
2 x LOFRANS vertical windlasses with Capstans
2 x LOFRANS mooring winches
Third control station on cockpit Cockpit sun awning
Cockpit teak table with chairs Cockpit bench settee*

*Swim platform sunbed
Bow deck sunbed and settees
BESENZONI tender crane on the flybridge
Hard top with glass sunroof
Flybridge table with chairs
Flybridge chaise-longues
Flybridge wetbar
6 x Underwater lights
2 x Searchlights
Full RINA-compliant safety & security equipment*



ADDITIONAL OPTIONS / EXTRAS

Back-rest in sunbathing area

Remote control for the electro-hydraulic gangway Searchlight electrically controlled (big rectangular) Dimmer for flybridge lights

Watertight lights for staircase from the cockpit to flybridge Lighting in spoiler stairs

Fridge GE without ice dispenser with inverter

Washer and dryer (separate units) 5.5 kg

MIELE Professional dryer and washing machines

Big shower w/LED lights (Master bathroom)

Dimmer lights in cabins

Mattress Queen size (double spring)

Additional towel-rails in the bathrooms (each)

Shelf additional for wardrobe

Filters RACOR for generators

Queen size bed in the crew cabin

Wooden door on the port side of the saloon Raised top of bar unit on the flybridge

WC with bidet

Preparation cables for enlightened boat name Indirect light under beds with RGB

Boiler 80 liters additional

CAT 5 LAN cabling

Telephone cabling

NAVIOP: Air conditioning control page

NAVIOP: Page for watermaker management unit NAVIOP: Data repetition on tablet

SIMRAD upgrade (2 monitors 19" + 1 monitor 17" in the main bridge) Flap angle indicator on the flybridge

Repeater radar/plotter on flybridge SIMRAD 14"

SIMRAD autopilot OP12 control keyboard

Echo stand-alone IS40 in the cockpit control station EPIRB emergency locator with ACR GPS

Multidata display SIMRAD IS42

Weather station ultrasonic NMEA-AIRMAR

Radar Navnet sensor PG 500

Auto identification system AIS receiver SIMRAD NAIS400 Rubber rugs under generators for noise reduction

Holder under the water maker

Side boarding ladder

Fresh water tap at the bow

Parquet custom flooring for the main deck

Custom flooring for the main helm

Parquet in bathrooms floor, including shower floors
Upgraded Master bathroom lavabo
Upgraded sofas in the saloon
Upgraded coffee table in the saloon
Upgraded dining table
Upholstery in lower deck cabins
Bed headboard cushions in lower deck cabins
Upgraded external upholstery
Free-standing furniture on flybridge
Free-standing furniture in the cockpit
Additional 250 l/h watermaker (added to the standard 180 l/h)

TENDER

WILLIAMS 460 Sport Jet (2017)

list :

Back-rest in sunbathing area
Remote control for the electro-hydraulic gangway Searchlight electrically controlled (big rectangular) Dimmer for fly lights
Lights: watertight for staircase from the cockpit to fly Lighting in spoiler stairs
Fridge GE without ice dispenser with inverter -diff. Washer and dryer (separate units) 5,5 kg -diff.-
Big shower w/led (master bathroom) -diff
Dimmer lights in cabins
Mattress queen size (double spring) -diff.- Additional towel-rail in the bathroom (each)
Shelf additional for wardrobe
Filter RACOR for generator
Queen size bed in the crew cabin
Wooden door on the port side of the salon
Raised top of bar unit on the fly – diff. from std

WC with bidet -diff.-
preparation cables for enlightened boat name
Indirect light under beds with RGB
boiler 80 liters additional
CAT 5 LAN cabling
Telephone cabling
NAVIOP: air conditioning control page
NAVIOP: page for watermaker management unit
SIMRAD upgrade -diff. (2 monitors 19” + 1 monitor 17” in the main bridge) flap angle: indicator on the flybridge
rubber rugs under generators
Holder under the water maker
Antenna TV SAT KVH TV8 with the standard receiver in the saloon Antenna empty dome for KVH TV8 for symmetry on roll-bar

SAT CABLES PREDISPOSITION

NAVIOP: data repetition on tablet
Repeater radar/plotter on fly Simrad 14?
Client's decoder installation

SIMRAD AUTOPILOT: OP12 CONTROL KEYBOARD Echo stand-alone IS40 in the cockpit
control station EPIRB emergency locator with ACR GPS
Multidata display Simrad IS42

Weather station ultrasonic NMEA-AIRMAR
Radar Navnet sensor PG 500
Autoidentification system AIS receiver SIMRAD NAIS400 TV 22? IN KITCHEN

Wall bracket for TV
TV 55" in salon MD
TV 55" IN MASTER CABIN DIFF. FROM STD TV 48" starboard VIP cabin diff.
TV 48" port VIP cabin diff.
TV 48" starboard GUESTS cabin diff.
TV 48" port GUESTS cabin diff.
Remote control signal relay IR
TVCC: external color camera, additional SCREEN for PROJECTOR in the salon
Side boarding ladder
Tap: fresh water at the bow
Parquet custom flooring for the main deck
Custom flooring for the main helm
Parquet in bathrooms floor, including shower floors
MASTER BATHROOM SINK – DIFF
SOFAS in the salon – diff.
Coffee table in the saloon – diff. from std.
DINING TABLE – diff.
Upholstery in LD cabins
Bed headboard cushions in LD cabins
External upholstery – diff. from std
Free-standing furniture on fly
Free-standing furniture in the cockpit
Upholstery in LD cabins
Miele Professional Dryer and Washing machine
Additional 250 L/H watermaker (added to the original 180 L/H)











