



abyacht.com : Jean Jacques Soete
yacht@abyacht.com
Whats App + 33 611 354 611 + 44 1414 160 507
Brokerage, New construction, Conversion, Refitting, management,
Flag, Charter. Refit, Surveyor, Commercial vessel, Xbow
commercial vessel.

Management and companies

Euro Flag Management, crew : Madeira Free zone Portugal, Malta, France, UK, Luxembourg, Italy.

Jorge Rodrigues : Madeira Portugal

+351 916 415 214 WhatsApp Email : jorgerodrigues-316m@adv.ao.pt

Sanlorenzo 126 2020

Asking Price : 12.900.000 € vat paid



The Sanlorenzo SD126 a yacht that epitomizes luxury and refinement. Built in 2020 and boasting EU VAT Paid status, this vessel stands as an exemplar of the renowned SD126 series, having undergone meticulous refinement and improvement to ensure the elimination of any design imperfections.

KEY FEATURES

- *Private use only, EU VAT paid and low hours*
- *Zero speed stabilizers*
- *Stunning exterior spaces*
- *Fold-down balcony on starboard side in the main saloon*
- *Jacuzzi on sundeck*

- *5 En-suite Staterooms for 10 guests*
- *Main deck Owner's stateroom with opening windows*
- *7 Crew*
- *Maintained to the highest standards*
- *Fully loaded with options*
- *RINA Class / MCA LY3 Compliant Charter ready*
- *Immediate delivery*

- *Designed by Francesco Paszkowski for the exterior and crafted with interiors meticulously curated by Sanlorenzo's design team, The SD 126 stands in impeccable condition, thanks to the dedicated care of an experienced Owner. She is exceptionally well-equipped, making her the ideal choice for extended voyages.*

Step inside, and you'll find a contemporary saloon exuding an atmosphere of relaxation. The soothing color palette of creams and soft silvers, combined with a spacious L-shaped sofa, creates the perfect setting for unwinding while enjoying your favorite TV shows or simply gazing at the open sea. The starboard fold-down balcony ensures a seamless connection to the natural beauty of the ocean.

Further enhancing the onboard experience is a separate formal dining area, generously bathed in natural light. For more intimate gatherings, the sky lounge offers an additional indoor socializing space where a unique Chess table invites you to engage in strategic games while basking in the ocean's serenity.

Accommodating up to 10 guests in absolute comfort, the yacht features an opulent Owner's suite on the main deck, complete with a king-sized bed, a lavish ensuite bathroom, a walk-in wardrobe, and a dedicated Owner's office. Two generously sized windows on either side can be opened electrically, allowing the gentle sea breeze to sweep through, creating an enchanting atmosphere. The lower deck hosts two VIP cabins and two twin cabins, each with its own ensuite.

Outdoors, the upper deck aft sets the stage for enchanting sunset and starlit dinners, with a spacious table that seats 10 guests comfortably.

The sun deck is a haven of relaxation during the day, featuring 3 Manutti loungers aft, and a Jacuzzi forward and a central bar and seating area which invites you to enjoy refreshing drinks and socialize under the protective embrace of the hardtop roof.

The motoryacht also comes equipped with a movable swim platform, providing effortless access to a range of water toys, including kayaks and paddleboards, as well as the yacht's diesel-jet RIB.

Powered by twin 1700 hp V12 MTU engines, she boasts a top speed of 18 knots and cruises comfortably at 13 knots, all while maintaining an impressively low fuel consumption at economic speeds.

She has been maintained to the highest standards, ensuring that she care she has received by her experienced owner and her crew, making her in pristine condition. Her impeccable condition is a testament to the the perfect condition. Her impeccable condition is a testament to the the perfect foundation for her new owner.

MAIN CHARACTERISTICS

Builder: Sanlorenzo S.p.A. (Italy)

Model: Sanlorenzo SD126

Naval Architecture: Sanlorenzo

Exterior Designer: Francesco Paszkowski

Interior Designer: Sanlorenzo / Owner

Type: Motor Yacht / Superyacht / Tri-deck Yacht

Hull Type: Semi Displacement

Hull Material: GRP

Superstructure Material: GRP

Decks: Teak

Year: 2020

Overall Length: 37.95 m (124' 6")

Beam: 8.00 m (26' 3")

Draft: 2.23 m (7' 3")

Gross Tonnage: 314 GT

Displacement: 222,000 kg (489,426 lb)

Class: RINA C \boxtimes Hull • Mach "Y",

MCA LY3 Compliant

Flag of Registry: Germany

Location: French Riviera

PROPULSION Type / Fuel: Twin Diesel

Main Engines: 2 x 1726 Hp (1269 kW) MTU 12V 2000 M86

Engine Hours: 1400 h (Sept. 2023)

Maximum Speed: 18 knots

Cruising Speed: 13 knots

Economical Speed: 11 knots

Fuel Consumptions 160 l/h @ 11 knots

Range (@ 11 knots with 1 Genset Working): 2350 NM +/- 100 NM

Gearboxes: 2 x ZF BW 3350

Main Engines Exhaust System: Main submersed exhaust at normal speed and secondary bulwarks exhaust above water line level

Shafts: 2 x Stainless-steel MARINOX 17

Propeller System: 2 x 5-fixed blades propellers

Rudders: 2 x Stainless steel rudders

Steering System: CMC Directa 100 with 2 independent electric power steering systems

TANKAGE

Fuel Capacity: 34,200 l (9,035 USG) in 4 x main tanks + daily tank

Fresh Water Capacity: 5,000 l (1,321 USG) 5

Black / Grey Water: 3,000 l (793 USG)

Dirty Oil: 450 l (119 USG)

Bilge Water: 700 l (185 USG)

Fuel Overflow Tank: 790 l (209 USG)

ACCOMMODATION

10 guests in 5 en-suite staterooms

Guest Cabin Configuration: Owner's suite on main deck forward, with double King-size bed, parquet flooring, with en-suite bathroom including His & Hers lavabos, shower room, walk-in wardrobe and Owner's office

2 x VIP staterooms on lower deck with double Queen-size beds, closets and en-suite bathrooms

2 x Twin guest staterooms on lower deck each with 2 single beds, closets and en-suite bathrooms

Main deck with main saloon and formal dining room including 2 sofas, 2 coffee tables and carpet flooring.

Side balcony with lateral door on starboard side. Bar area. TV with electrical raising system.

Dining area with table for 10, carpet flooring and day head in corridor.

Fully equipped galley

Skyounge on upper deck with lounge, coffee table, 2 armchairs, 2 poofs, gaming table with chairs and bar area. TV with electrical raising system.

Day head and pantry

Wheelhouse on upper deck forward with console navigation and communication instrumentation, small sofa, table, chart area

Crew Accommodation: 7 Crew in 4 cabins Captain's cabin on upper deck, adjacent to wheelhouse, with wide single bed, chair, desk, safe and en-suite shower room

Crew quarters forward on lower deck with 3 bunk-bedded crew cabins, all en-suite

Crew mess with pantry and laundry area

EXTERIOR LAYOUT

Lower Deck:

Swim Platform: Moveable swimming platform for tender hauling and launching system

Foldable swimming ladder, stainless-steel handrails

Deck shower

Removable boarding pole for embarking tender

Whips on both sides

Foredeck bow lounge with cushions

Main Deck:

Aft Cockpit: Large sofa with cushions, 5 designer coffee tables, central coffee table in wood, 2 individual armchairs, 1 central dual armchair

Fore External Area: 2 x L-shaped sofas with cushions, 2 tables in teak with stainless-steel bases

Opening Balcony: 2 Poufs, 2 designer coffee tables

Upper Deck:

Upper Deck Aft: 2 x L-shaped wooden surrounding sofas with cushions

Sun awning aft with stainless-steel poles

Wooden dining table with 10 armchairs 6

Sundeck: Sunbathing

Area Stern: 3 x MANUTTI chaise lounges, 2 poufs and 4 coffee tables Dining table in teak with 6

armchairs Sun awning aft with stainless-steel poles Wet Bar: 2 x Bar stools, cabinet with Corian

top, refrigerator, ice maker and sink Jacuzzi with wooden frame and surrounding sunpads Hard top

MAIN EQUIPMENT

Stabilizers: CMC Marine SE 80 zero speed fin stabilizer system (at anchor and underway)

Bow Thruster: CMC Marine BTM 60EA-52

Rudder Angle Indicator: CMC

Fuel Separator: ALFA LAVAL MIB 303S-13/33 fuel cleaning system Fire/

Bilge Pump: Self-priming pump in engine room

Spare Emergency diesel pump for the firefighting system

Automatic bilge system in each watertight compartment

Air Conditioning: DOMETIC 360,000 BTU/h

Sewage Treatment System: TECNICOMAR 70

Hot Water Boilers: 3 x GIANNESCHI 200 liters, 3-phases, double element Hot Water Circulation

Pump: WILO

WC System: TECMA toilets 220V AC
Water Makers: IDROMAR MC9S 750 l/h

ELECTRICAL EQUIPMENT

Electrical Circuits:

400V AC / 50Hz / 3-phase main power

230V AC / 50 Hz / 1-phase for small users and technical area lights

Generators: 2 x 70 kW KOHLER Diesel generators 70 EFOZDJ 400V AC / 50Hz / 3-phase + neutral (140 Amp) with sound cover

Shore power plug with Cablemaster reeling system

Batteries: 24V DC battery set of 480 Ah approx. (12V DC elements) in control room Main engine ignition batteries 24V DC batteries of 220 Ah approx. (12V DC elements)

Genset ignition batteries 24V DC batteries of 110 Ah approx. (12V DC elements)

RTF emergency batteries 24V DC batteries of 210 Ah approx. (12V DC elements) gel batteries feeding the radio communication systems

Emergency batteries 24V DC batteries of 630 Ah (12V DC elements) gel

Battery Chargers: Battery charger for services 24V DC 75 A

Battery charger for main engine start-up 24V DC 50 A

Battery charger for gen set start-up 24V DC 25 A and 1 spare (same capacity)

RTF battery charger 24V DC 25 A 7

Emergency battery charger 24V DC 75 A

NAVIGATION & COMMUNICATION EQUIPMENT

MTU electronic engine controls

MTU electronic engine displays

Radar FURUNO RCU 014

Radar X-BAND black box 6kW, 64NM

Echo sounder FURUNO 50B-6B

Fishfinder FURUNO

Compass FURUNO JUPITER

Autopilot FURUNO NAVIPILOT

Chartplotter FURUNO

GPS FURUNO GPA-017S

AIS FURUNO GPA-07S

VHF radio FURUNO,

GMDSS, approved for Inland & Sea Radar

FURUNO XN-20AF Sat-Com

FURUNO Satellite compass system Wind Instruments

FURUNO RD93 Navtex FURUNO

EPIRB Rudder tiller

Analogic rudder angle indicator

Weather station

Searchlight

Navigation lights Air horn

Loudhailer

Terrestrial TV antenna

2 x VHF antennas

2 x GPS antennas

Office Equipment:

Computer ships laptop

Printer

ENTERTAINMENT EQUIPMENT

TV Sat Antenna SEATEL TV 100

Radome SEATEL TV 100

4G Wi-Fi with harbour hot spot antenna

Land TV antenna and AM/FM antenna

Main Saloon:

50" TV 8

Amplifier with 5.1 home theatre

DVD Blu-ray player

iPad Mini controller

Dining Room:

2 x Speakers

Skylounge:

50" TV Amplifier with 5.1 home theatre

DVD Blu-ray player

iPad Mini controller

Master Stateroom:

46" TV

Amplifier with 5.1 home theatre

DVD Blu-ray player iPad Mini controller

VIP Staterooms (x2):

32" TVs Amplifiers with 2 speakers

DVD Blu-ray players

Twin Staterooms (x2):

28" TVs

Amplifiers with 2 speakers

DVD Blu-Ray players

Sundeck:

4 x Speakers and amplifier

iPad Mini controller

Upper Deck Aft:

4 x Speakers

iPad Mini controller

Forward Deck:

4 x Speakers

Captain's Cabin:

22" TV Car stereo with

DVD player

2 x Speakers

Crew Cabins:

Car stereo with 2 speakers

Crew Mess: 28" TV Amplifier with 2 speakers

DVD Blu-Ray player 9

GALLEY, DOMESTIC & LAUNDRY EQUIPMENT

Galley:

MIELE oven

Microwave

Induction stove

Extractor hood

2 x Refrigerators

Freezer

Ice maker

Dishwasher

Main Deck Pantry:

Wine cooler

Coffee maker

Refrigerator

Main Deck Saloon:

Refrigerator

Skyounge Pantry:

Ice maker

Wine cooler

Dishwasher

Sundeck:

Refrigerator

Ice maker

Crew Mess:

Stove

Microwave

Refrigerator

Laundry:

2 x MIELE washing machines

2 x MIELE tumble dryers

Cold garbage storage on foredeck

DECK EQUIPMENT

BESENZONI telescopic retractable gangway with two remote controls, teak inserts and stainless-steel handrails

2 x Electrical mooring capstans (aft)

2 x Electrical windlasses (fore) Stainless-steel chain stopper
2 x 225 kg anchors with 120m anchor chains
4 x Underwater lights
MARQUIP sea stairs
Hard top on sundeck
Port & starboard wing control stations on upper deck 10
The garage can accommodate a tender, 3.25 max breadth and 5.05m max length
There is a jet ski hauling and launching system in the garage

SAFETY & SECURITY EQUIPMENT

Sea-water hose system
FM200 fire extinguishing system in engine room, garage and control room
Powder, foam and CO2 fire extinguishers throughout the vessel
Smoke detectors 4 x Life rafts for a total of 20 pax.
4 x Lifesaving rings Life jackets
First aid kit
CCTV: Cameras 2 in cockpit, 3 in engine room, 1 in wheelhouse
Other Compliance for certification according to MCA LY3 (large commercial vessel short range navigation)

TENDERS & WATERSPORTS

WILLIAMS 505 DieselJet tender

*Personal equipment such as water toys are not included in the sale and are subject to negotiation
Maintenance History Since the vessel is recent, used

Since the vessel is recent, used privately only, professionally maintained and with permanent crew, no major refits have been carried out. Always maintained to the highest standards. RINA approved surveys & certifications are up to date.

Berth place management possible on French or Italian or Croatian Riviera as well as Spain (Mainland and Balearic Islands), Portugal and her Madeira Free zone island , Greece and Turkey.





















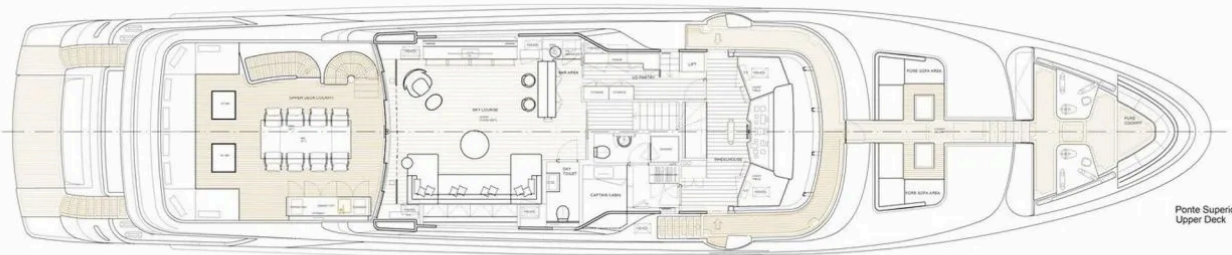
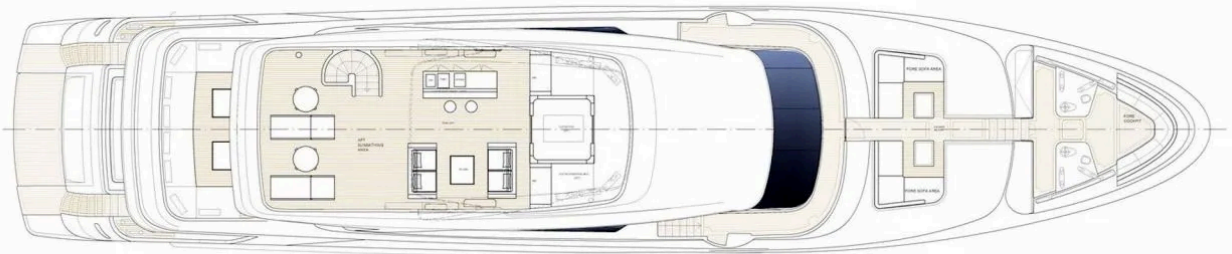




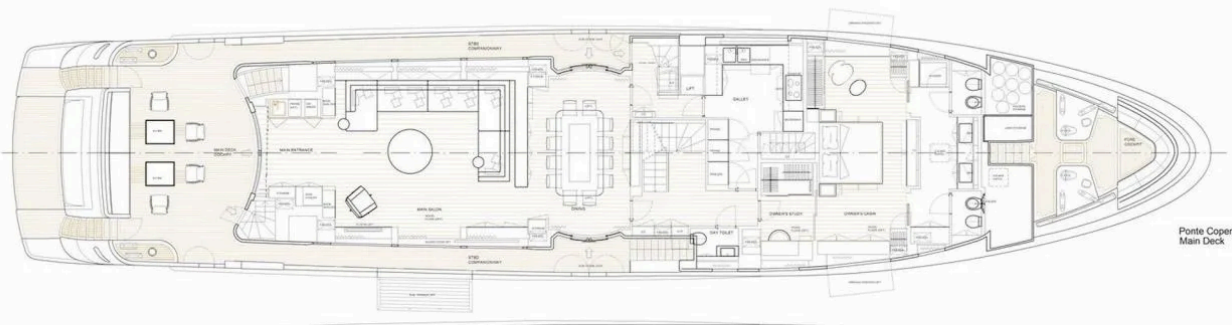




Profilo



Ponte Superiore
Upper Deck



Ponte Coperta
Main Deck