



Sounion II

Builder	Benetti
Year/Refit	1969/2023
LOA	31.62m (103' 9")
Beam	6.2m (20' 4")
Draft	2.42m (7' 9")
Cabins	4
Guests	10
Speed	13/11.5 kts
Price	€4,200,000 Ex VAT





Main Aft Deck



Main Aft Deck



Main Aft Deck



Main Aft Deck



Main Saloon



Main Saloon



Main Saloon



Main Saloon to Dining Area



Dining Area



Dining Area



Study



Study



Master Cabin with 2 Bunk Beds



Master Cabin - Bridge Deck



Master Cabin - Bridge Deck



Master Cabin - Bridge Deck



Master Cabin - use of Private Terrace



Bridge Deck - Aft



Bridge Deck - Aft



Bridge Deck - Aft



Portuguese Bridge



Portuguese Bridge



Portuguese Bridge



VIP Cabin - Lower Deck



VIP Cabin - Lower Deck



VIP Cabin - Lower Deck



VIP Cabin - Lower Deck



VIP Cabin - Lower Deck



VIP Cabin - Lower Deck



VIP Cabin Bathroom - Lower Deck



VIP Cabin 2 - Lower Deck



VIP Cabin 2 - Lower Deck



VIP Cabin 2 - Lower Deck



VIP Cabin 2 - Lower Deck



VIP Cabin 2 - Lower Deck



Twin Cabin - Lower Deck



Sun Deck



Sun Deck



Sun Deck



Sun Deck



Sun Deck - Outdoor Cinema















Yacht Specifications

DIMENSIONS

Length	31.62m (103' 9")
Beam	6.2m (20' 4")
Draft	2.42m (7' 9")

GENERAL

Year	1969/2023
Builder	Benetti
Naval Architect	Benetti
Exterior Design	Benetti inhouse design team
Interior Design	Anouska Hempel
Hull Construction	Steel
Superstructure	Aluminium
Gross Tonnage	169

ACCOMMODATION

Number of Cabins	4 (3 Double, 1 Twin)
Total Guests	10
Total Crew	6

TECHNICAL INFORMATION

Main Engines	2 x Volvo TAMD 750 hp each
Engine Hours	Port: 3.665 hours - 9th August 2023 Starboard: 3.666 hours - 9th August 2023

Main Generators	2 x Kohler 55kw EFOZ
Generator Hours	Port: 11.313 hours - 9th August 2023 Starboard: 8.996 hours - 9th August 2023
Emergency Generators	1 x Night 16.5kw EFKOZD
Fuel Capacity	38.950 litres
Fuel Consumption	150 litres/hr
Range	2,900nm @ 11 knots
Maximum Speed	13 knots
Cruising Speed	11.5 knots
Stabilisers	Underway

CERTIFICATIONS

Flag	Malta
Port of Registry	Valletta
Class / MCA	Bureau Veritas

TENDERS & TOYS

- 1 x GENIUSS tender (2022) 3,20m with Yamaha 30HP
- 2 x Seabob F5
- 1 x Nautibuoy swim platform + 2 seabob parking-dock
- 2 x Wakeboard (1 x senior, 1 x junior)
- 1 x Jobe SUP
- Snorkelling equipment
- 1 x inflatable kayak
- Fishing equipment

GYM EQUIPMENT

- Yoga mats
- Weights
- Workout resistance bands
- 1 x Elliptical Trainer to be placed on board upon request

AUDIO VISUAL EQUIPMENT AND DECK FACILITIES

- 4 x LG 23" TV's in the cabins
- 1 x SONY 40" TV in the living room
- Satellite TV in all cabins and salon
- PlayStation 4
- SONOS Sound System
- LG Beach Party Portable Speaker
- Board games
- Wine preservation La Sommelier

COMMUNICATIONS

- Meridian 5G Wi-Fi coverage through out all decks
- 3 portable VHF's

VARIOUS

- Air Conditioning
- WiFi

PRICE

€4,200,000 Ex VAT

These particulars have been prepared from information provided by the sellers and are intended as a general guide to the vessel. We cannot, however, be liable for any inaccuracy. It is up to the purchaser to confirm details of concern to him by survey, inspection and/or enquiry of the seller and to ensure that the purchase contract properly reflects his concern and specific details upon which he may rely. We always advise an independent survey.

Refit Details

2023

- New AC system
- Brand new water maker
- Interior refit (new sofas, sittings, tables, blinds, fabrics, lamps)
- Navigational instruments added
- Brand new radar
- Brand new wings and navigation aids

2022

- Completely overhauled (as “zero hours”) bowthruster, stabilizer, side ladder, crane, gangway, shaft, bushing and propeller
- Completely overhauled of the main engines and the 3 generators
- Completely overhauled of the icemaker, watermaker, alfalaval, aircon
- Raised rails at 1mt high as for Maltese commercial flag
- Emergency escape doors in all the cabins lower deck
- Emergency escape door in the engine room
- Shutter for fire prevention for the dampers
- Pantry separate door for fire prevention
- Changed all the mattress and cushion for fire prevention
- Camera control
- Smoke detector with 2 control panel repeaters
- BNWAS with 2 control panel repeaters
- Wi-fi 5G system

- TV sat
- Renewal of the galley and pantry: furniture, electro machines, design
- New set of dishes, glasses, toiletries, bedding sheets, sofa decoration
- Wheel house with a new leather furniture, seats, instruments for navigation aids
- New tender
- New fenders
- New hull color
- New name
- New crew

2019 /2020

- Main engines service
- Generators service
- Crew area upgrade
- Galley area upgrade
- New oven
- Service & disinfection of A/C system
- Service of the anchors
- New Sundeck cushions covers
- New Watertoys see list
- Many touch ups to the interior and exterior of the yacht
- Teak wood works

2018

- 2 New EPIRBS
- Complete replacement of radio-communication equipment with new one (VHF FURUNO, SSB FURUNO, 3portable VHF
- Superstructure refit and paint job
- Hull paint job
- Restoration of rubbers and complete refit of the teak on all decks
- Ceilings replacement in main deck salon
- New awning on sun deck, (carbon fiber poles & UV protection tents)
- New Sunbrella upholstery on all sundeck cushions
- New exterior Paola Lenti furniture on upper deck
- New watertoys, (seabob, inflatable kayak, inflatable stand up paddle board,e.t.c.)
- New 2.70m help tender
- Captains’ cabin refitted to accommodate 2 crew in total

These particulars have been prepared from information provided by the sellers and are intended as a general guide to the vessel. We cannot, however, be liable for any inaccuracy. It is up to the purchaser to confirm details of concern to him by survey, inspection and/or enquiry of the seller and to ensure that the purchase contract properly reflects his concern and specific details upon which he may rely. We always advise an independent survey.

Refit Details

2017

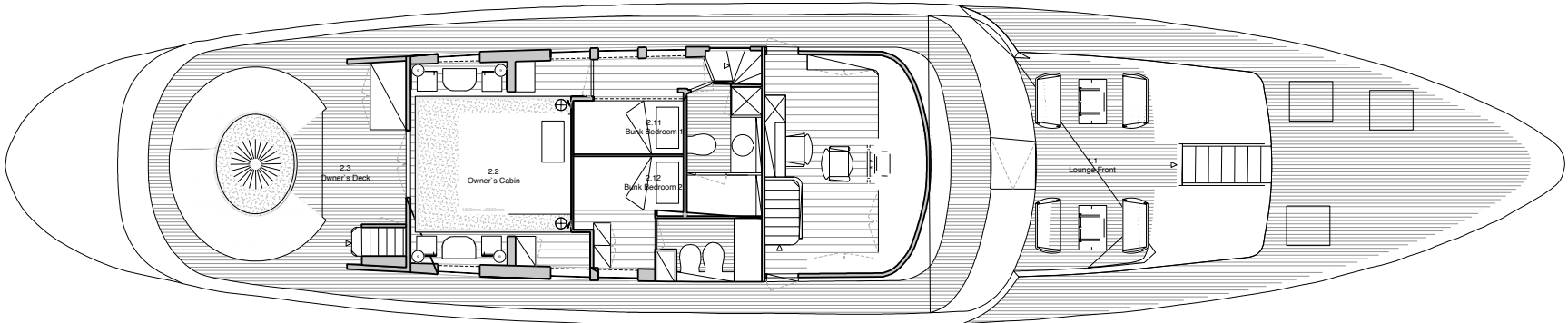
- Engines overhauling
 - Main generators overhauling
 - Purchase of extra new night generator
 - Rodriguez Stabilizer full refit
 - Bow thruster system (replacement of all parts - new motor), full refit
 - New desalinator
 - Complete restoration of all tanks (fuel tank, fresh water tank, black water tank, grey water tank)
 - Full refit of air-conditioning system (new condensers, new fan-coils)
 - Purchase of new tender ZAR360, new engine SUZUKI 40hp, 4 stroke
 - Passerelle refit
 - Refit of hydraulic side gangway
 - Complete refit and restore of all pumps (bilge pump, fire pump, fresh water pumps, grey water pumps, black water pumps, air-conditioning pumps)
 - Floors replacement
 - New beds
 - New mattresses
 - New bedlinen, pillows, towels, beach towels
 - Showers refit Scroll to the top
- Master cabin on upper deck fully refitted, addition of two fixed pullman berths
 - New Captains' cabin & ensuite on upper deck
 - Change of whole lighting and replacement in led lights
 - Replacement of all life saving equipment (2 new life rafts - new life vests)
 - New fire-fighting equipment (fire extinguishers 2017-2018, new CO2 system 2017)
 - New plotter
 - New Wi-Fi system, coverage through out all decks
 - New cutlery, plates, glasses, new pottery, etc
 - Play station 4
 - SONOS sound system
 - 4 TVs LG 23" in the cabins
 - 1 TV SONY 40" in the living room
 - New cooker Miele
 - New washing machine SIEMENS 5kgs
 - New drying machine SIEMENS 5kgs
 - New Wine preservation LA SOMMELIER
 - 2 x New refrigerators BOSCH

2007

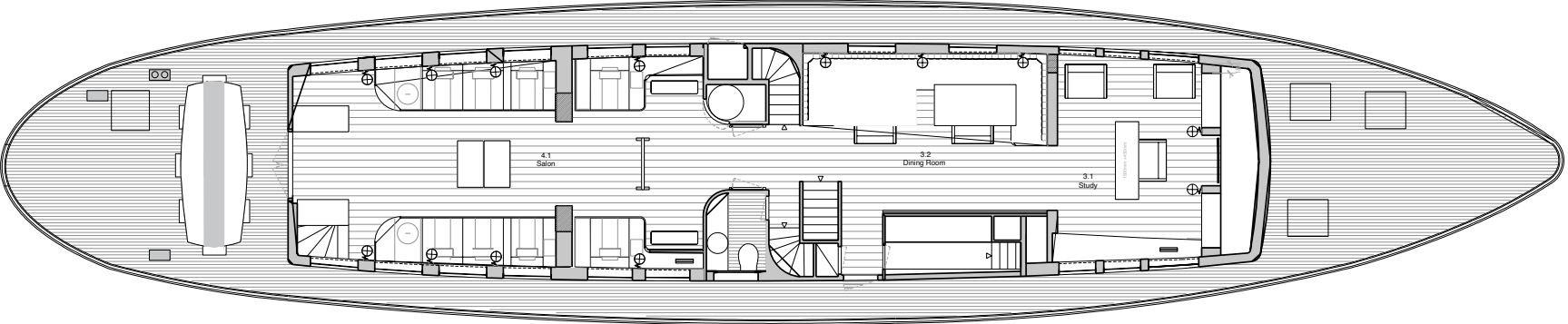
- 2 x New engines

These particulars have been prepared from information provided by the sellers and are intended as a general guide to the vessel. We cannot, however, be liable for any inaccuracy. It is up to the purchaser to confirm details of concern to him by survey, inspection and/or enquiry of the seller and to ensure that the purchase contract properly reflects his concern and specific details upon which he may rely. We always advise an independent survey.

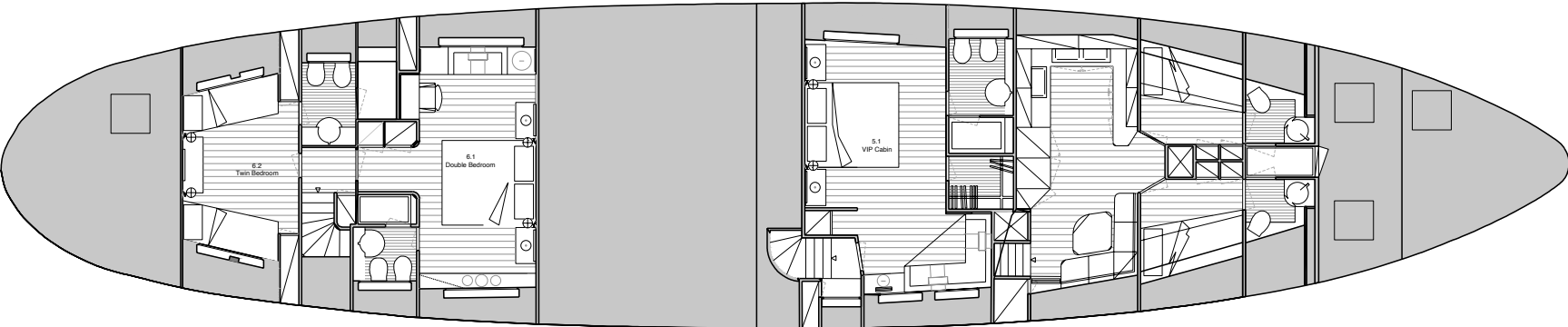
General Arrangement



Upper Deck



Main Deck



Lower Deck

These particulars have been prepared from information provided by the sellers and are intended as a general guide to the vessel. We cannot, however, be liable for any inaccuracy. It is up to the purchaser to confirm details of concern to him by survey, inspection and/or enquiry of the seller and to ensure that the purchase contract properly reflects his concern and specific details upon which he may rely. We always advise an independent survey.

